




2024 Report Card: Early Hearing Detection & Intervention

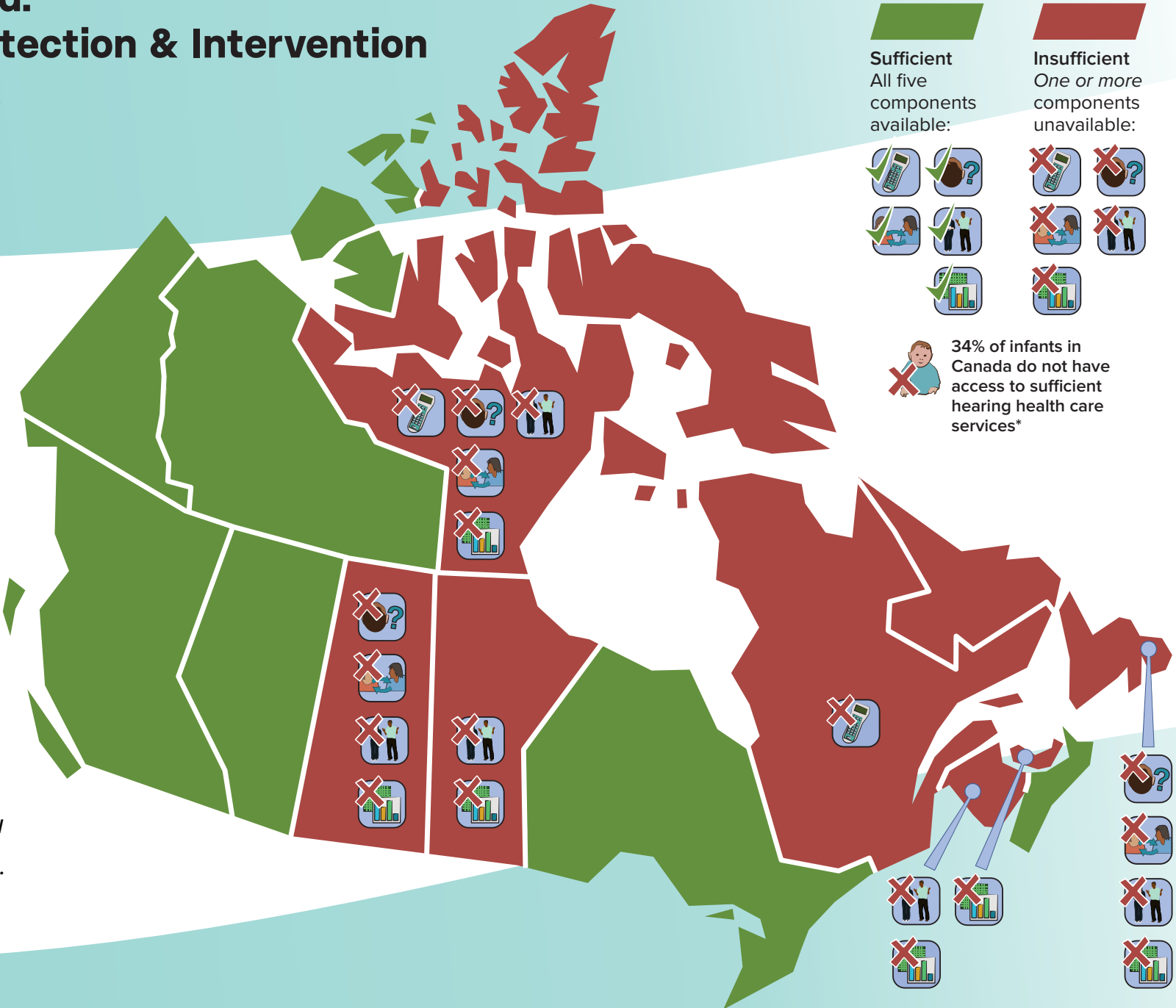
Developed by the Canadian Infant Hearing Task Force (CIHTF) (www.infanthearingcanada.ca)

©Bagatto 2024

Early Hearing Detection and Intervention (EHDI) programs aim to proactively address infant hearing health and include:

-  universal hearing screening of all newborns
-  identification of babies with permanent hearing loss
-  support services for technology & language development
-  family support
-  monitoring and evaluation of the program

Grades were assigned based on all five of the components being available province or territory-wide.



Developed by:



Canadian Academy of Audiology
Académie Canadienne d'audiologie



Speech-Language & Audiology Canada
Communicating care

Endorsed by:



Canadian Paediatric Society
Société canadienne de pédiatrie

Canada's Overall Grade:



Insufficient

*Based on 2022/23 Statistics Canada live birth rates for Insufficient provinces and territories